

BELLE ÉPOQUE  
20<sup>TH</sup> CENTURY SUITES

BELLE ÉPOQUE  
20<sup>TH</sup> CENTURY SUITES

THE TIMELESS FEELING OF BELLE EPOQUE





# The Timeless Feeling of Belle Époque

Belle époque suites captivates with its prime Athens location, offering an immersive step back into the past where excellence and a sense of longing prevailed, leaving an indelible mark on each visitor.

AN ERA OF ELEGANCE, INNOVATION,  
PROSPERITY, AND CULTURAL  
REFINEMENT, BRINGING AWE-  
INSPIRING BEAUTY AND GRANDEUR.



BELLE ÉPOQUE  
20<sup>TH</sup> CENTURY SUITES



# Distances – The best location to be !

**Acropolis & Parthenon** (1.4km) – 21mins on foot  
**Acropolis Museum** (1.6km) – 16mins of foot  
**Monastiraki Square** (650m) – 8mins on Foot  
**Plaka** (600m) – 7mins on Foot  
**National Archaeological Museum** (1.5km) – 21mins on Foot  
**Syntagma Square** (500m) – 7mins on foot  
**Temple of Olympian Zeus** (1.2km) – 18mins on Foot  
**Ancient Agora of Athens** (950m) – 12mins on Foot  
**Benaki Museum** (1km) – 16mins on foot  
**Panathenaic Stadium** – (1.6km) – 22mins on Foot  
**Byzantine and Christian Museum** (1.3km) – 20mins on foot  
**Athens Concert Hall** (Megaro Mousikis) (2.4km) – 36mins on Foot  
**Kerameikos Archaeological Site** (1.4km) – 18mins on Foot  
**Odeon of Herodes Atticus** (1.5km) – 22mins on foot  
**Athens National Garden** (900m) – 12mins on Foot  
**Technopolis City of Athens** (1.8km) – 24mins walk  
**Thiseio** (1.6km) – 21mins walk  
**Old Parliament** (300m) – 5 mins on foot  
**Ermou Street** (300m) – 5mins walk  
**Hellenic Parliament** (700m) – 10mins on foot  
**Zappeion Hall** (1.4km) – 19mins walk  
**National Gallery** (1.8km) – 28mins walk

THESE TIMES ARE APPROXIMATE AND CAN VARY BASED  
ON WALKING SPEED, ROUTE, AND INDIVIDUAL PACE.







## Elegant Double Room

2 GUESTS | BALCONY

This room caters perfectly to active visitors seeking a central hub in the heart of Athens for exploration or business travelers desiring a convenient base.

## Deluxe Double Room

2 GUESTS | BALCONY or WINDOW

This room stands out as a haven for vintage enthusiasts seeking top-notch services. Painted in soft, pale hues, adorned with wallpapers boasting intricate patterns reminiscent of the 1920s.





## Belle Deluxe Room

2 GUESTS | BALCONY | BUILDINGS CORNER

This space boasts a distinct design, situated at the building's corner with openings on three sides, offering views of the bustling street and sidewalk from the balcony.

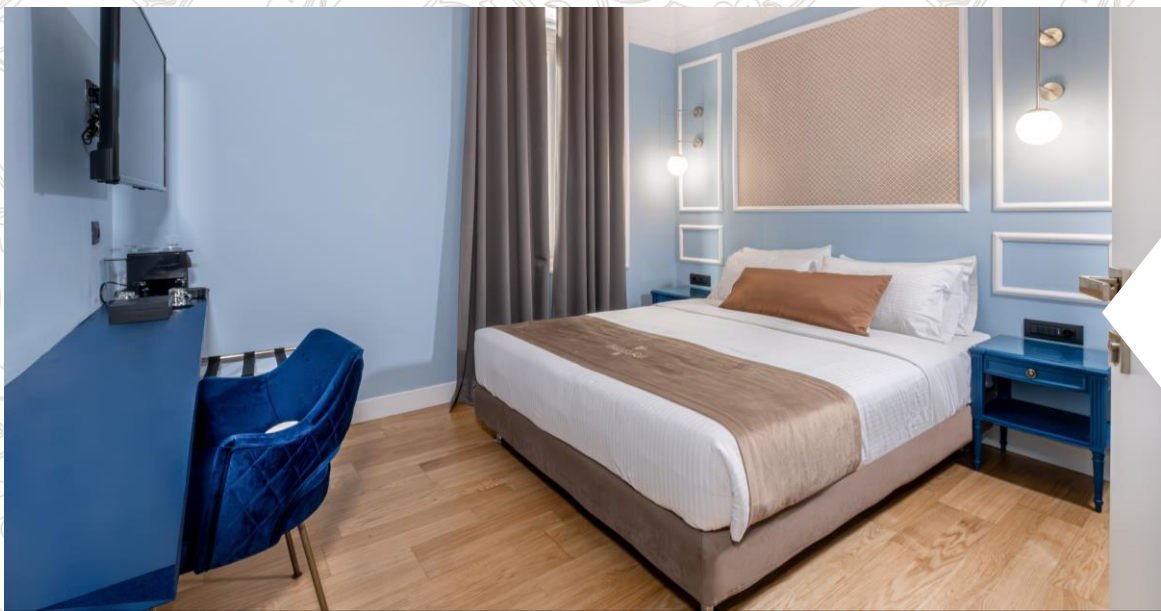
## Superior Double Room

2 GUESTS | BALCONY or WINDOW | DESK

Complete with a balcony and windows overlooking a historic pedestrian street in Athens, this suite offers not just accommodation but a captivating journey through time and style.







## Deluxe Suite

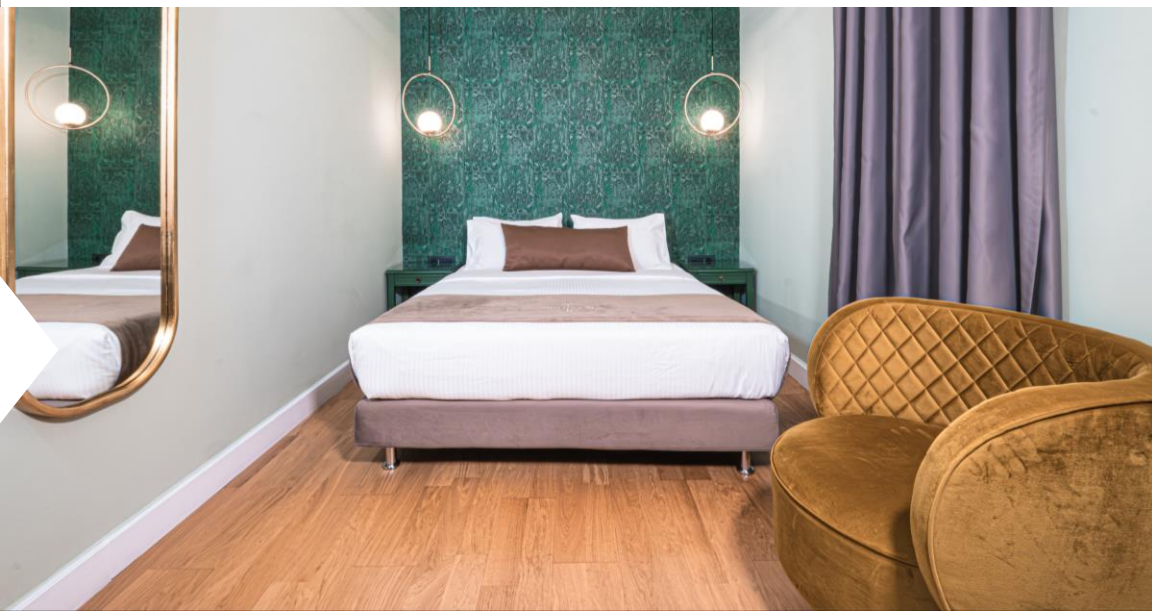
4 GUESTS | BALCONY

Perfect for families, this room stands as a matchless haven, inviting exploration of the city's myriad attractions while providing a beautiful and comfortable retreat.

## Premium Acropolis View

2 GUESTS | TERRACE | ACROPOLIS VIEW

This room caters wonderfully to guests seeking a romantic ambiance, providing top-tier amenities along with a private terrace boasting breathtaking views of the Acropolis.





## Facilities & Services



Airport / Port Transfer Service

Boat Trips

Car & Motorbike Rental

Fax & Photocopy Service

Laundry & Ironing Service

Lobby Lounge

Meeting Room / Event Space

Restaurant (Prac Sitele Italian)

Safe Deposit Box

Satelite TV

Shower & Changing Room

Travel Desk

Wi-Fi Internet Access





## Restaurant Pracsitele

### A TRULY SOPHISTICATED DINING EXPERIENCE

The menu at Prac.sitele features a wide range of traditional Italian dishes, including homemade pasta, wood-fired pizzas, fresh seafood, and a variety of meat and vegetarian options. All of the ingredients used are fresh, seasonal, and locally sourced, ensuring that every dish is bursting with flavor.

Highlight : The 48-hour aged pizza dough is a highlight of the menu, showcasing the restaurant's dedication to sourcing only the finest ingredients and crafting each dish with care and attention to detail.







Contact Us

7TH PRAXITELOUS STR, ATHENS, GREECE

T. +30 210 7000314 E. [INFO@BELLEPOQUESUITES.GR](mailto:INFO@BELLEPOQUESUITES.GR)